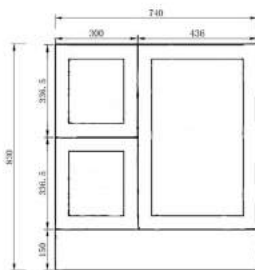
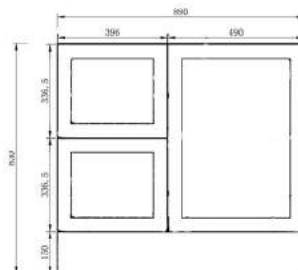


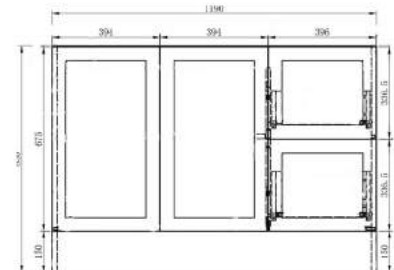
AUSTIN60



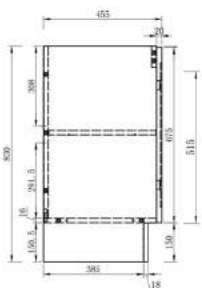
AUSTIN75



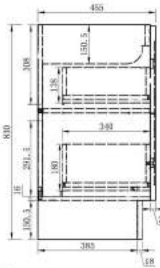
AUSTIN90



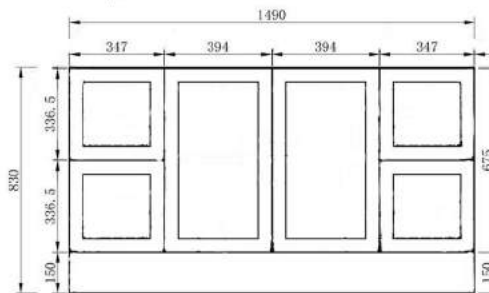
AUSTIN120



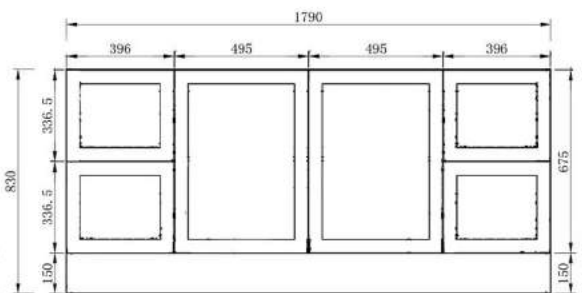
600mm  
Side View



all other sizes  
Side View



AUSTIN150



AUSTIN180

## FEATURES

- Pre assembled cabinets, ready for installation.
- Traditional elegance in a modern design
- High quality soft close hinges and drawer slides
- The matte white surface is both easy to clean and stylish
- Large storage space with a height-adjustable shelf for maximum comfort
- Moisture resistant 16mm melamine and 18mm MDF.

arova®

With our policy of continuous improvement, we reserve the right to change or discontinue at any time, specifications or designs without notice. Please confirm all particulars before purchase and have the product at site before rough in. To the extent permitted by law, Arova is not liable for any errors, omissions or misrepresentations of information or for any loss or damage suffered by persons who use or rely on such information.

[www.arova.com.au](http://www.arova.com.au)